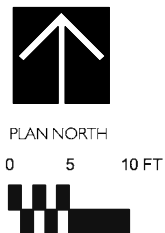
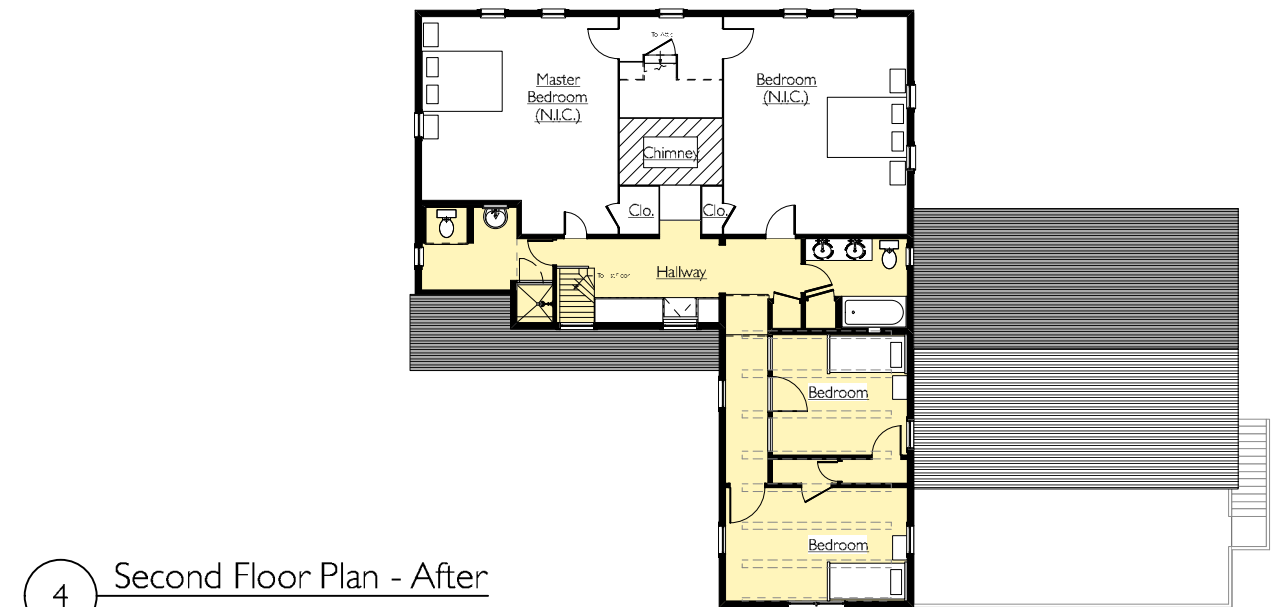
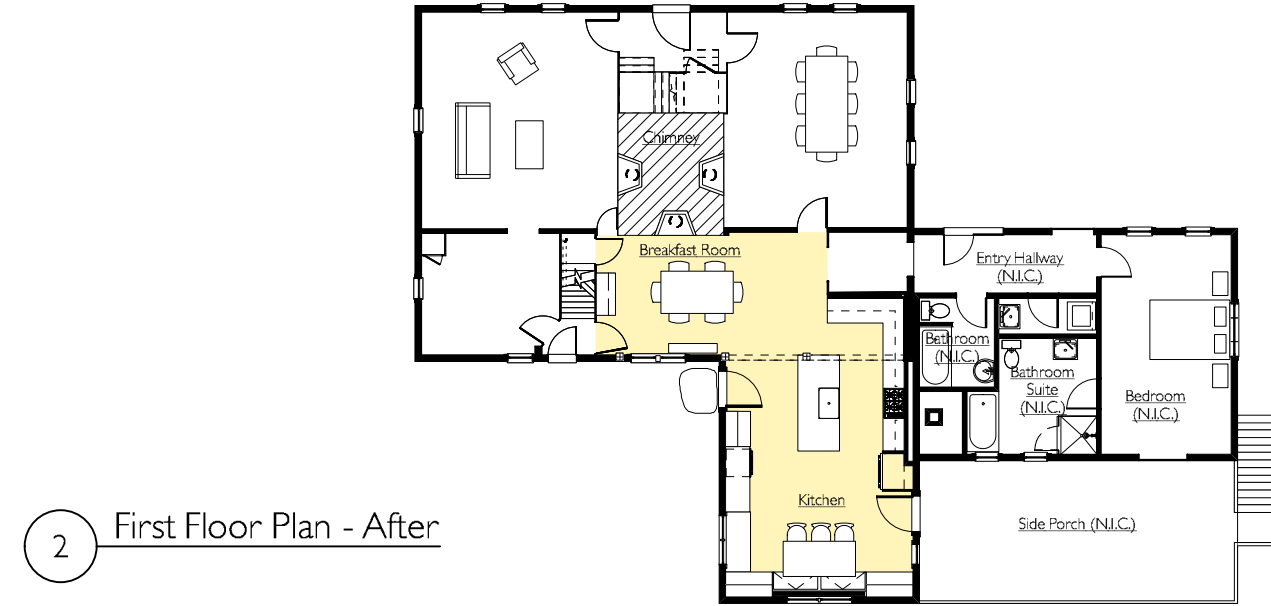
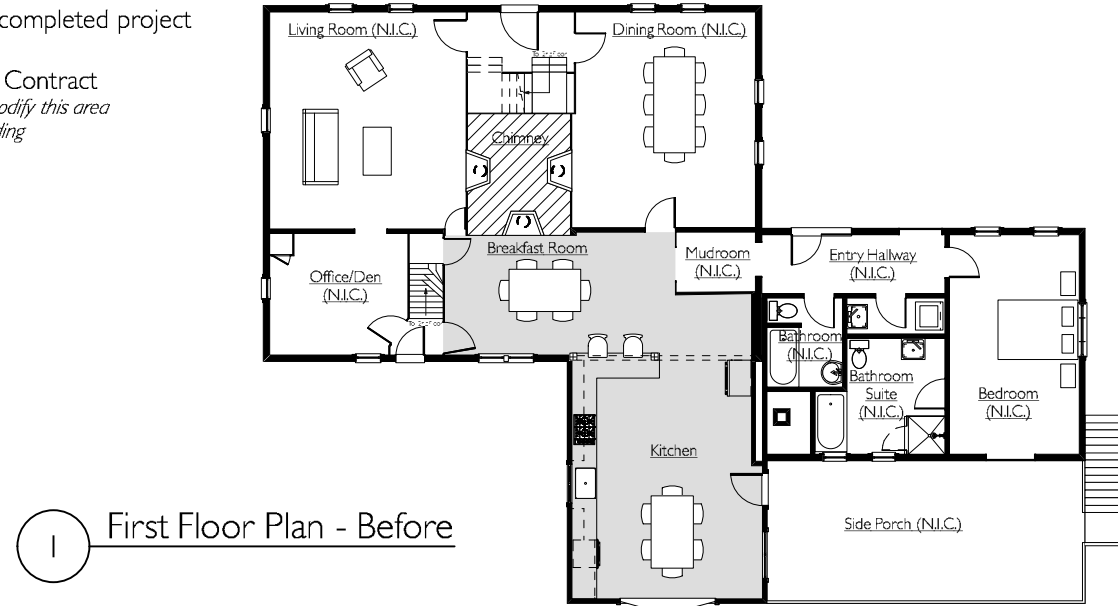


Renovation and Addition, Westford, MA

■ Scope of proposed project

■ Scope of completed project

N.I.C. - Not In Contract  
architect did not modify this area  
of the existing building



PROJECT TEAM  
 Architect: Latady Design, LLC  
 Structural Engineer: THL Consulting, LLC  
 Contractor: Landmark Services, Inc.

PROJECT SCOPE  
 The renovation and expansion of this 1700's Saltbox house included:  
 • extensively remodeling the kitchen  
 • adding a second floor above the kitchen with two new bedrooms, storage space, and a bathroom  
 • improving circulation between the first and second floors by adding a shed dormer in the second floor hallway  
 • reusing and exposing original structural beams and columns where appropriate